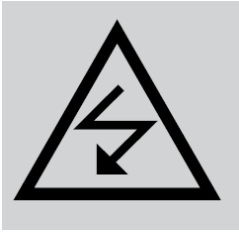


Interfacing the Vaisala DMT142/143 Dewpoint Transmitter to a RJG IA1-S-VI-24 Surface Mount Analog Input Module.



Always power down equipment before working on it



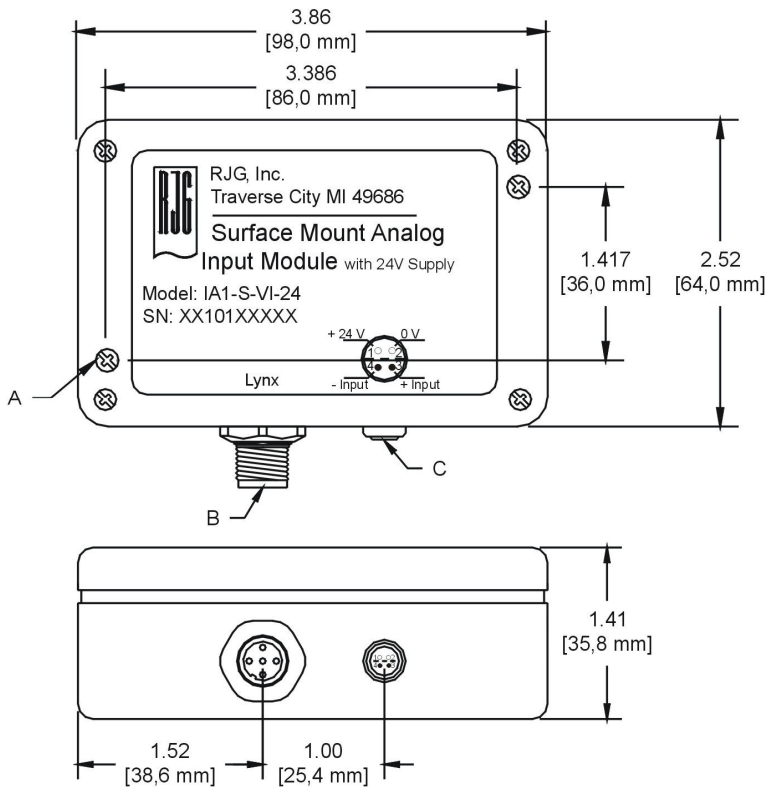
Make sure that the ground potential of the structure is the same as the power ground used by the eDART™

Make sure the Analog Input module and any connecting cables are out of the way of any sources of static such as feeder tubes and material hoppers

Step One: Install the Vaisala DMT142/143 Dewpoint Transmitter per the instructions supplied with the unit



Step Two: Mount the RJG IA1-S-VI-24 Surface Mount Analog Input Module.

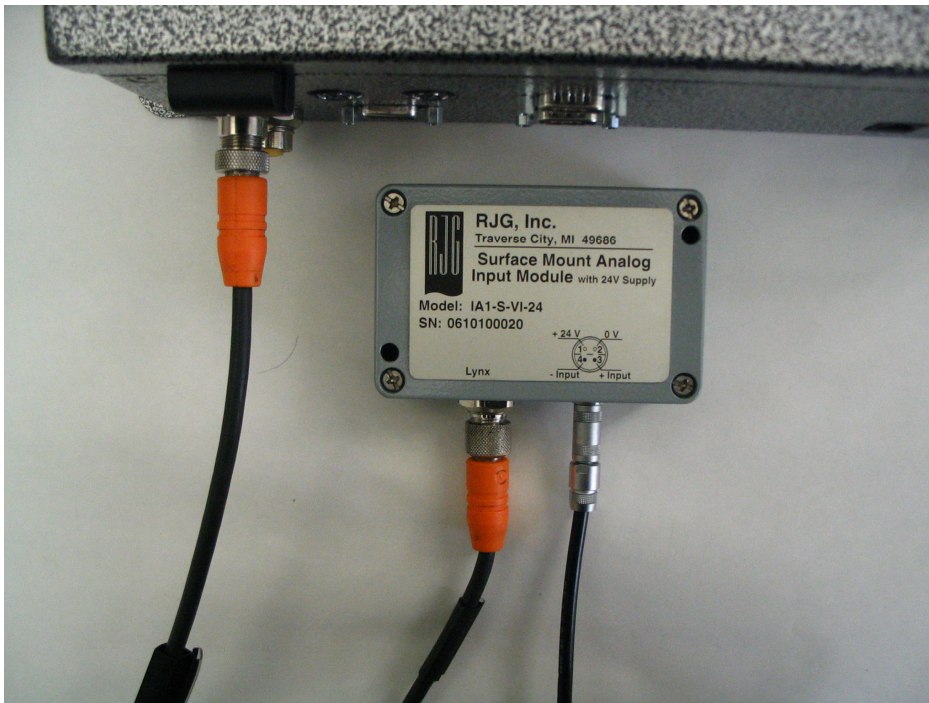


- A: Mounting Holes
- B: Lynx Connector
- C IA1-S-VI-24 input connector

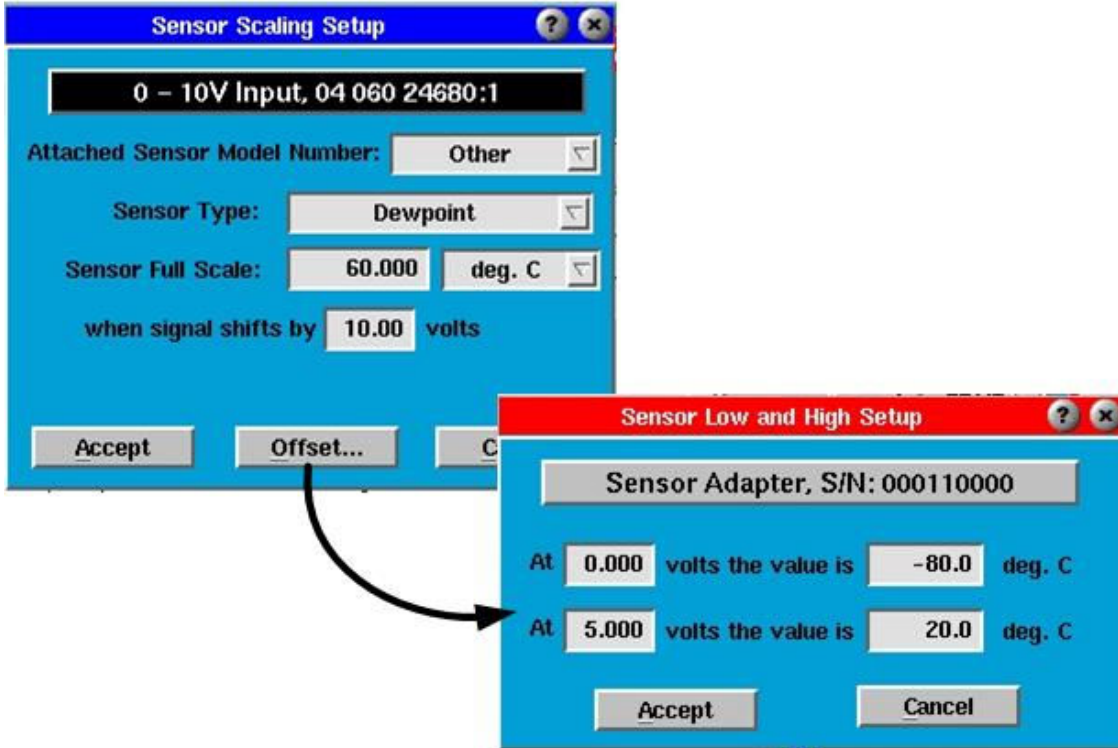
Step Three: Connect the Vaisala DMT142/143 Dewpoint Transmitter to a RJG IA1-S-VI-24 Surface Mount Analog Input Module using the supplied cable. (See Note 1 below.)



Step Four: Connect the RJG IA1-S-VI-24 Surface Mount Analog Input Module to the eDART™



Step Five: Software Setup: Once the IA1-D-VI-24 is attached to the eDART, it should show up on the Sensor Locations screen. Select the setup screen and choose 'Other' in the Attached Sensor Model Number field. Next, click the Offset button and setup as shown in the Figure below.



Note 1.

If the Viasala Cable does not have a connector attached and the RJG Analog Input cable was supplied with pigtails, use the following procedure to join the two cables.

To wire a Viasala Dew Point sensor cable to an RJG, Inc. Surface Mount Analog Input cable, connect the following wires together using proper solder techniques and cover connections with heat shrink tubing or use ‘butt splices’ of the correct size for 22-24AWG wire.

Viasala Cable		RJG Analog Input Cable
Brown	wires to	Black
White	wires to	White
Blue	wires to	Brown
Black	wires to	Blue

After completing the wiring, connect the Surface Mount Analog Input module to an e-DART using a Lynx cable of appropriate length. Verify operation of the module and Dew Point sensor.

Part Numbers

DMT142-B1A11X
DMT143G1B1A1A3A1ASX