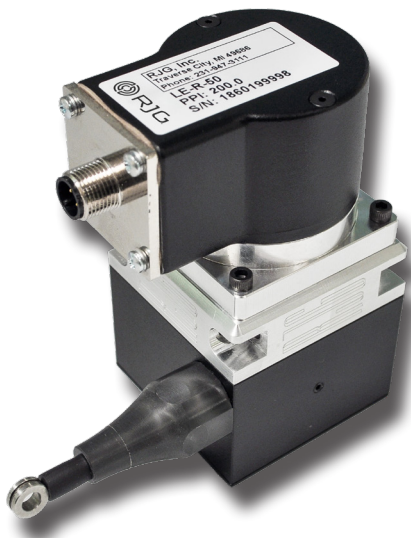
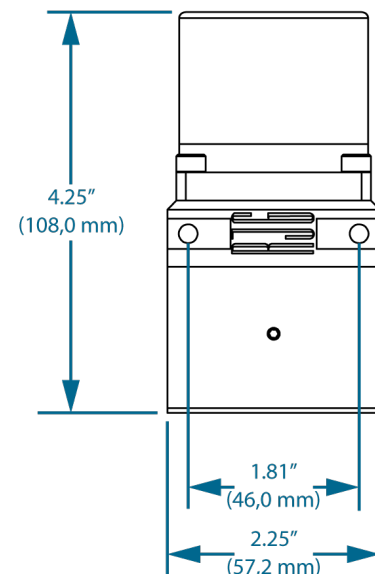
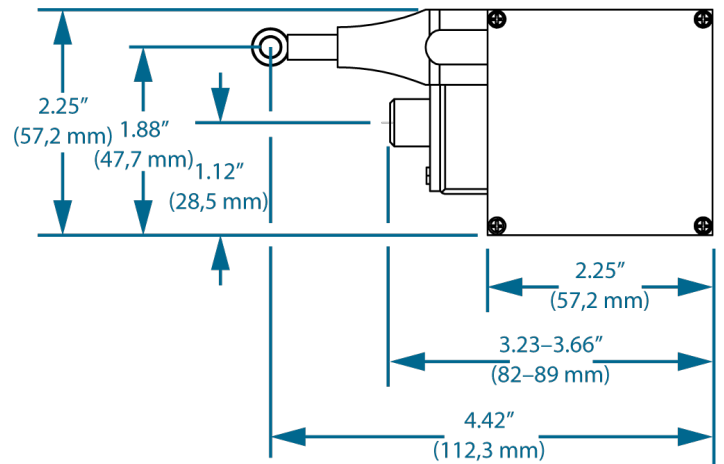
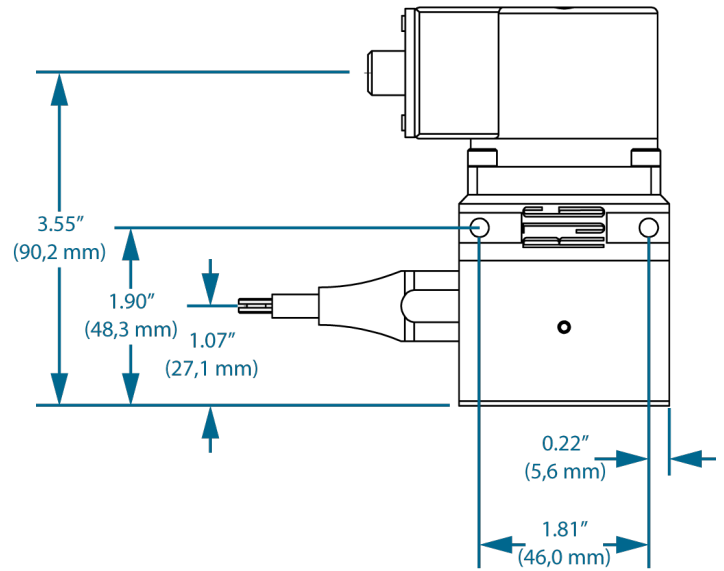


**LYNX™ 50-INCH  
STROKE/VELOCITY SENSOR  
LE-R-50-REVB**



**PRODUCT DIMENSIONS**



The LE-R-50-REVB is a molding machine-mountable linear position/velocity sensor designed for use with the eDART® and CoPilot® systems. The stroke-velocity sensor can be used to monitor standard screw position and speed on most injection molding machines.

**TECHNICAL SPECIFICATIONS**

Accuracy	± 0.1% of Full Scale
Repeatability	± 0.02% of Full Scale

## INSTALLATION

Refer to product manual for all dimensions—available for download online at [www.rjginc.com](http://www.rjginc.com).

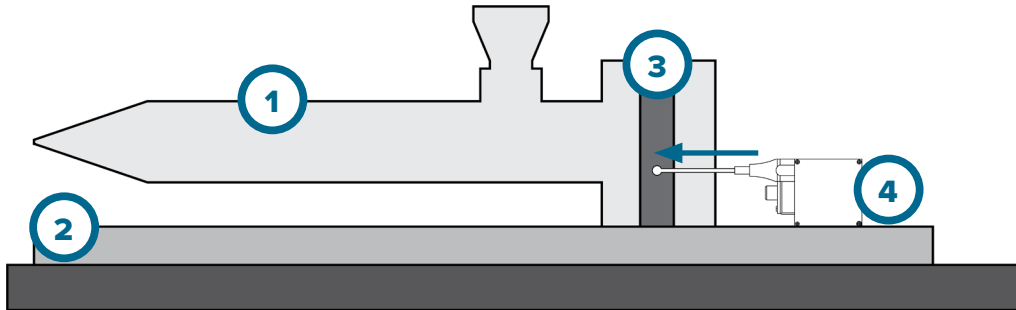
1 Machine Injection Unit

2 Injection Unit Sled

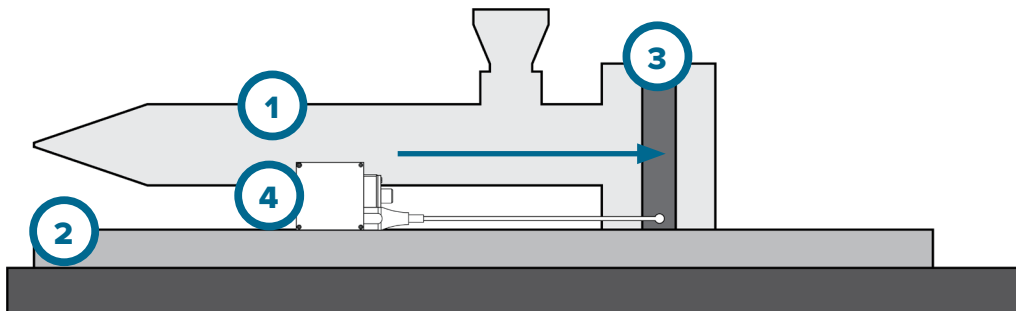
3 Injection Cylinder

4 LE-R-50 Stroke/Velocity Sensor

### Preferred Installation



### Preferred Alternate Installation



### Alternate Installation

