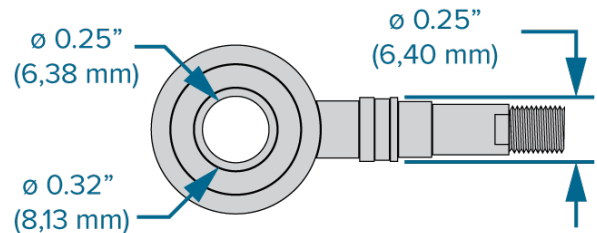
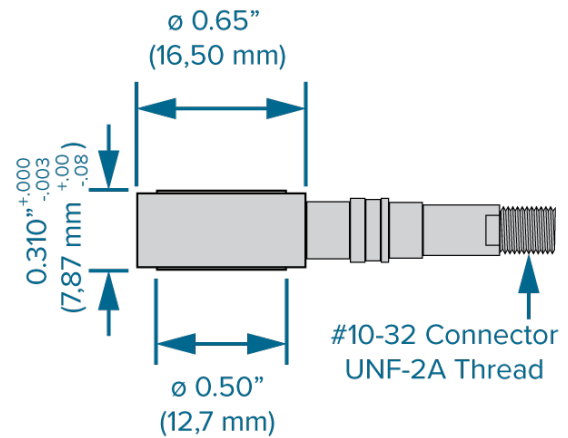
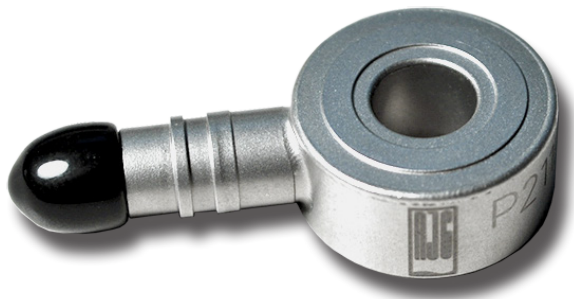


PRODUCT DIMENSIONS

PIEZOELECTRIC LOAD WASHER SENSOR

211M18



The piezoelectric load washer sensor 211M18 measures cavity pressure on ejector sleeves. The core pin extends through the load washer so that only pressure from the ejector sleeve is monitored.

TECHNICAL SPECIFICATIONS

PERFORMANCE/ENVIRONMENTAL

Sensing Element	Piezoelectric	
Range	10–5,000 lb.	0.04–22 kN
Sensitivity (±15%)	18 pC/lb.	4,05 pC/N
Linearity	1% Full Scale	
Max. Temperature	400 °F	204 °C

SENSOR

Sensor Housing	Stainless Steel
Connector	#10-32 Coaxial Jack

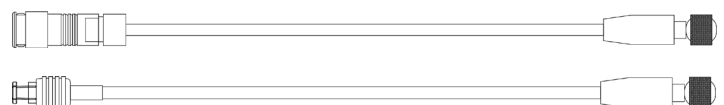
COMPATIBLE CABLES & LENGTHS

COMPATIBLE CABLES

Single-Channel	C-LW003C10-F
Multi-Channel	C-LW003C10-A

CABLE LENGTHS

Length must be longer than needed to facilitate safe installation and removal of connector from tool to prevent tension on the lead wire; generally, 2–3" (50–75 mm) of slack is sufficient. Use good sense to determine the appropriate cable length required for each application.



CABLE ORDERING LENGTH

INSTALLATION

Refer to product manual and installation guide for all dimensions—available for download online at www.rjginc.com.

1 Core Pin

2 Ejector Sleeve

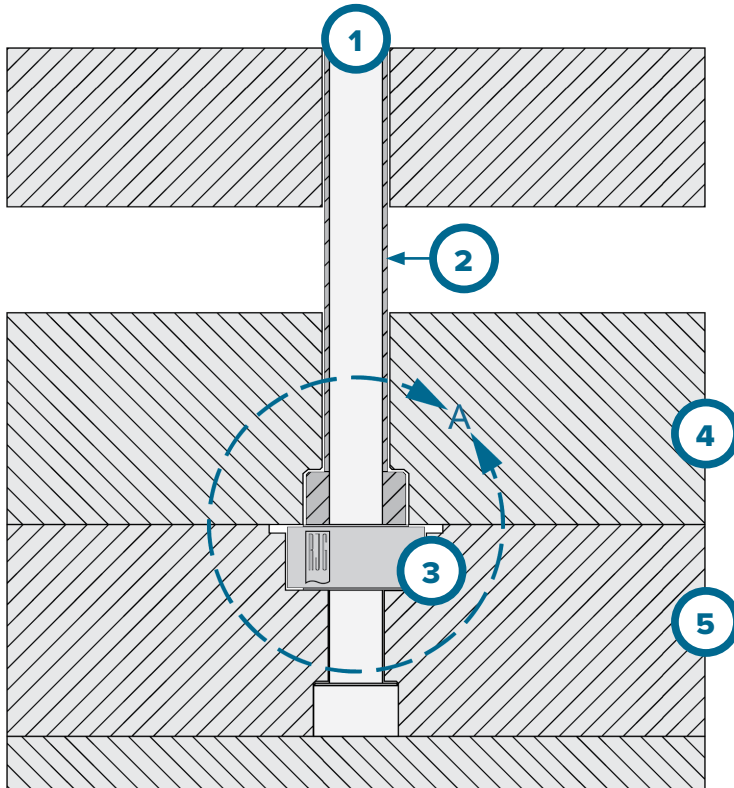
3 Piezoelectric Load Washer Sensor

4 Ejector Retainer Plate

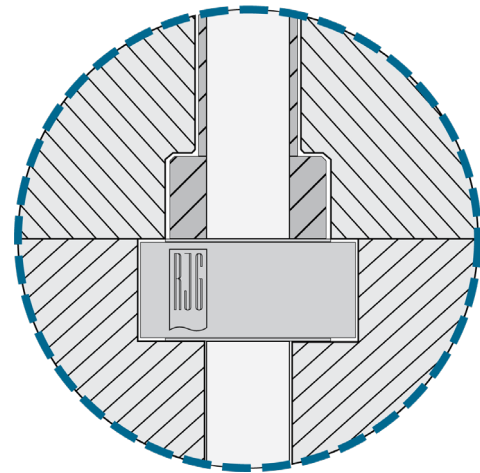
5 Ejector Plate

6 Spacer[†]

[†] Spacer is necessary if ejector sleeve does not contact 80% of sensor loading surface.

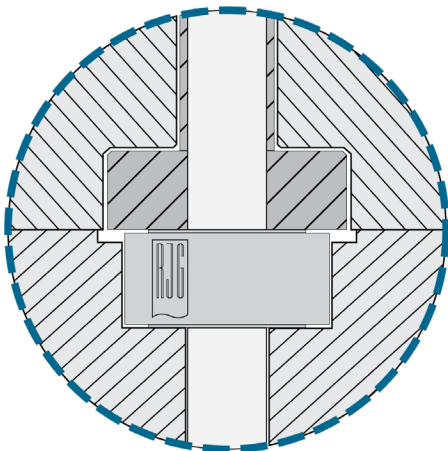


STANDARD INSTALLATION



DETAIL A

EJECTOR SLEEVE COUNTER-BORE



SPACER[†] INSTALLATION

