

## Network and Manage your eDART System™

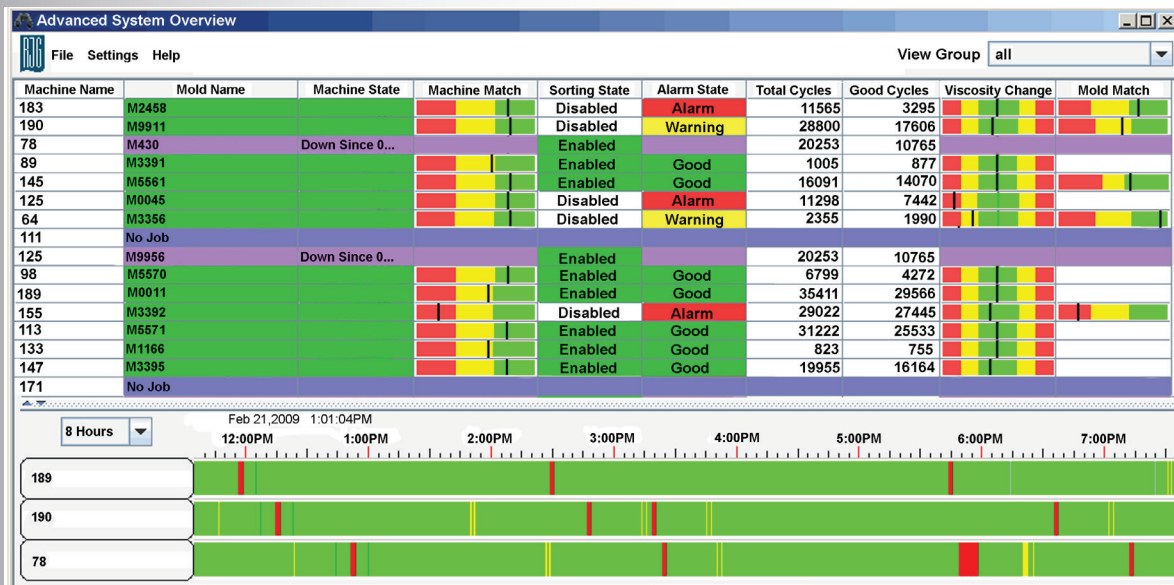
RJG's eDART Data Manager (EDM) is a complete software solution for networking and managing your eDART network. With the EDM, getting an eDART up and running is as simple as plugging it into the network.

The eDART Data Manager will become the center piece of your eDART network, providing a single, simple interface to perform all the functions needed to access, support and use the eDART. The EDM can become the gateway between your existing plant network and the eDART network.

The Advanced System Overview function comes with the EDM. This allows you to view all of the eDARTs on your network from the web browser on your desktop. You can see which presses are down and for how long, what jobs they are running, number of good cycles, reject cycles, etc. The Process Viewer allows you to view the current process running on any eDART with real time cycle and summary data.

### Features and Benefits

- Automatic backup of all eDART data
- Cross Copy for managing your mold files, templates, etc.
- Advanced System Overview with the Process Viewer
- Time synchronization of all eDART's on the network



**RJG, INC.**

Traverse City, MI 49686 USA

[www.rjginc.com](http://www.rjginc.com)